



## TrackMyHealth v-PORTAL 20-02

### TrackMyHealth PORTAL ACCESS PORTAL DEDICATED TO THE CONTROL OF THE ENTRANCE OF PERSON IN STRUCTURES OPEN TO THE PUBLIC

#### Main Features:

- Alluminium portal structure
- High precision 3D equipment counting people
- Entrance area control camera gate
- Queuing length control camera gate
- Bypass / climbing up side control cameras
- Remote assistance Entry-phone
- Body temperatura control device with +/- 0,3° precision
- Check presence of mask
- Traffic control light to allow entry
- Acoustic anomalies warning
- I/O signals for integrated management of a possible turnstile/gate system
- Power backup to protect the system from voltage drops
- Caompatible with Vigilate PSIM Xentinel Platform
- SDK for integration with tird parts PSIM or Access Control Platforms



### FEATURES:

v-PORTAL 20-02 is a compact product designed for the control of people entering a structure open to the public, whether this is a large retail area, a supermarket, a shopping center, public office, exhibition areas, stations, seaport areas, airports, railway stations, etc.

The product allows to check, certify and document that the person entering the structure is equipped with an personal protection equipment and that it does not show symptoms of fever or abnormal temperature.

v-PORTAL 20-02 also allows you to count the maximum number of people that the structure/area can host simultaneously and, working with a portal v-PORTAL 20-04 that counts the people who leave it, allows to manage - through the integrated traffic light signs in the portal - new entries of people in front of as many exits. In this way it can be ensured that there are never more people in the controlled structure/area than the maximum number of people hosted simultaneously.

The product integrates, in a robust portal, a series of functions that certify in a single operating logic, the safe entry of visitors or customers. All the data that make up the input event - such as time, date, number of the entrance gate, the outcome of the temperature control if in the presence of an alarm, the possible absence of personal protection equipment alarm (face mask), the entry number assigned to the transit, the thermal photograph of the person in alarm and the color photo (if the customer's privacy plan allows it), the video of the entrance event - can be stored locally or sent to a PSIM supervision that can store them.

All data and images are managed in compliance with GDPR standards; data and video streaming are encrypted and authenticated to ensure maximum security in terms of privacy legislation.

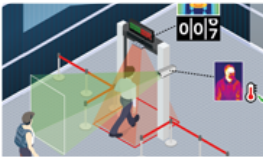
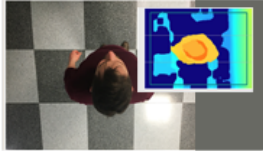
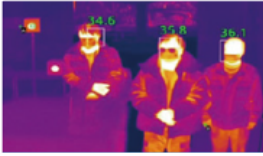
- **Shops - Market - Shopping centers - MOL**
- **Public offices - Exhibition Centers**
- **Railway stations - Seaports - Airports**





# TrackMyHealth v-PORTAL 20-02

## DATASHEET:



<b>Processor:</b>	internal Intel Quad / core 2.1 GHz
<b>Storage:</b>	HD 1TB image recordings and input events
<b>3D Precision Counter:</b>	stereoscopic video system + IR projector + quad-core ARM analyzer
<b>Thermal camera:</b>	resolution 128 * 128 pixels
<b>Thermal camera:</b>	temperature measuring accuracy +/- 0.3 °
<b>Thermal camera:</b>	distance reading from 25 to 70 cm
<b>Entrance Area Camera:</b>	IP Digital Color camera 1920 * 1080 pixel resolutuion
<b>Queuing Control Camera:</b>	IP Digital Color camera 1920 * 1080 pixel resolutuion
<b>Bypass / climbing up side control cameras:</b>	N° 2 1920 * 1080 pixel resolutuion
<b>Remote assistance Entry-phone:</b>	VOIP bi-directional communication device
<b>Display:</b>	7 "color display
<b>Streaming Recording:</b>	Continuous RTSP H264 @ up to 25fps configurable
<b>Communications:</b>	n° 1 Gigabit Ethernet port
<b>Digital Input:</b>	n° 2 PNP 24Vdc
<b>Digital Output:</b>	n° 2 relays
<b>Power supply:</b>	220Vac 30W
<b>Dimensions:</b>	mm 2550 * 1100 * 500 (H-L-P)
<b>Weight:</b>	Kg 30 approx



Vigilate - PSIM  
(Physical Security Information Management)



V-041221-0859-UPD

Vigilate S.r.l.

Via Napoleonica, 6 - 25086 Rezzato BS Tel. +39 030 8081000 | Fax +39 030 8081019 | www.vigilatevision.com | info@vigilatevision.com  
Cap. Soc. € 10.000,00 I.V. | C.F. / P.IVA.: IT 01598660056 - SDI: W7YVJK9



Dasa-Rägister